



## Short description



- Stainless steel IP67 single point load cell
- Bending beam
- Suitable for belt, platform and other electronic weighing devices
- Maximum platform size:
  - for 50kg-200kg: 400 x 400 mm
  - for 250kg-500kg: 600 x 800 mm
  - for 750kg-2t: 1200 x 1200 mm



Test certificate no. TC7867 Revision 0  
C of C no R60/2000-NL1-10.31

## Available models

Capacity	Accuracy	Full article description
100kg	C3 Excluded from OIML	B6F-C3-100kg-3B6
150kg	C3 Excluded from OIML	B6F-C3-150kg-3B6
200kg	C3 Excluded from OIML	B6F-C3-200kg-3B6
250kg	C3 Excluded from OIML	B6F-C3-250kg-3B6
500kg	C3	B6F-C3-500kg-3B6
750kg	C3	B6F-C3-750kg-3B6
1000kg	C3	B6F-C3-1000kg-3B6
2000kg	C3	B6F-C3-2000kg-3B6

Specifications and dimensions are subject to change without notice and do not constitute any liability whatsoever.

# Type B6F Load Cell

## Technical specifications B6F

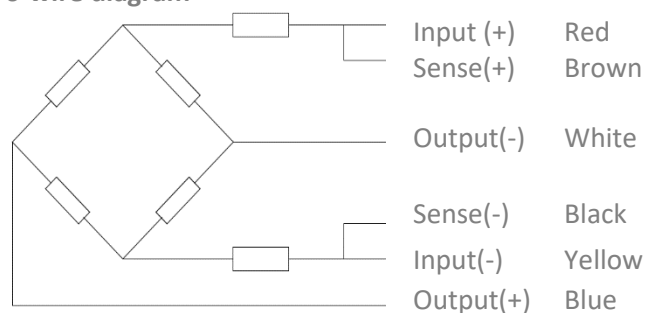
Accuracy class		C3	OIML R60 C3
Output sensitivity ( = FS )	mV/V	2.0 ± 0.2	
Maximum capacity ( E <sub>max</sub> )	kg	100, 150, 200, 250	500, 750, 1000, 2000
Max. number of load cell intervals	n <sub>LC</sub>	3000	
Ratio of min. LC verification interval	$Y = E_{max} / V_{min}$	5000	12000
Combined Error	%FS	≤± 0.0230	
Minimum dead load	Of E <sub>max</sub>	0%	
Safe overload	of E <sub>max</sub>	150 %	
Ultimate overload	of E <sub>max</sub>	300 %	
Zero balance	of FS	< ± 1.0 %	
Excitation, recommended voltage	V	5 ~ 12	
Excitation maximum	V	18	
Input resistance	Ω	385 ± 5	
Output resistance	Ω	350 ± 3	
Insulation resistance	MΩ	≥5000 ( at 50VDC )	
Compensated temperature	°C	-10 ~ +40	
Operating temperature	°C	-35 ~ +65	
Storage temperature	°C	-40 ~ +70	
Element material		Stainless steel	
Ingress Protection (acc. to EN 60529)		IP67	
Recommended torque on fixation	Nm	M12:75 M16:200	
ATEX classification (optional)		II1G Ex ia II1C T4	II1D Ex iaD 20 T73°C II3G nL IIC T4

## Wiring

### Features:

Shielded, 6 conductor cable.  
 Cable diameter: Ø6.2mm  
 Standard cable length: 3m  
 Shield not connected to element

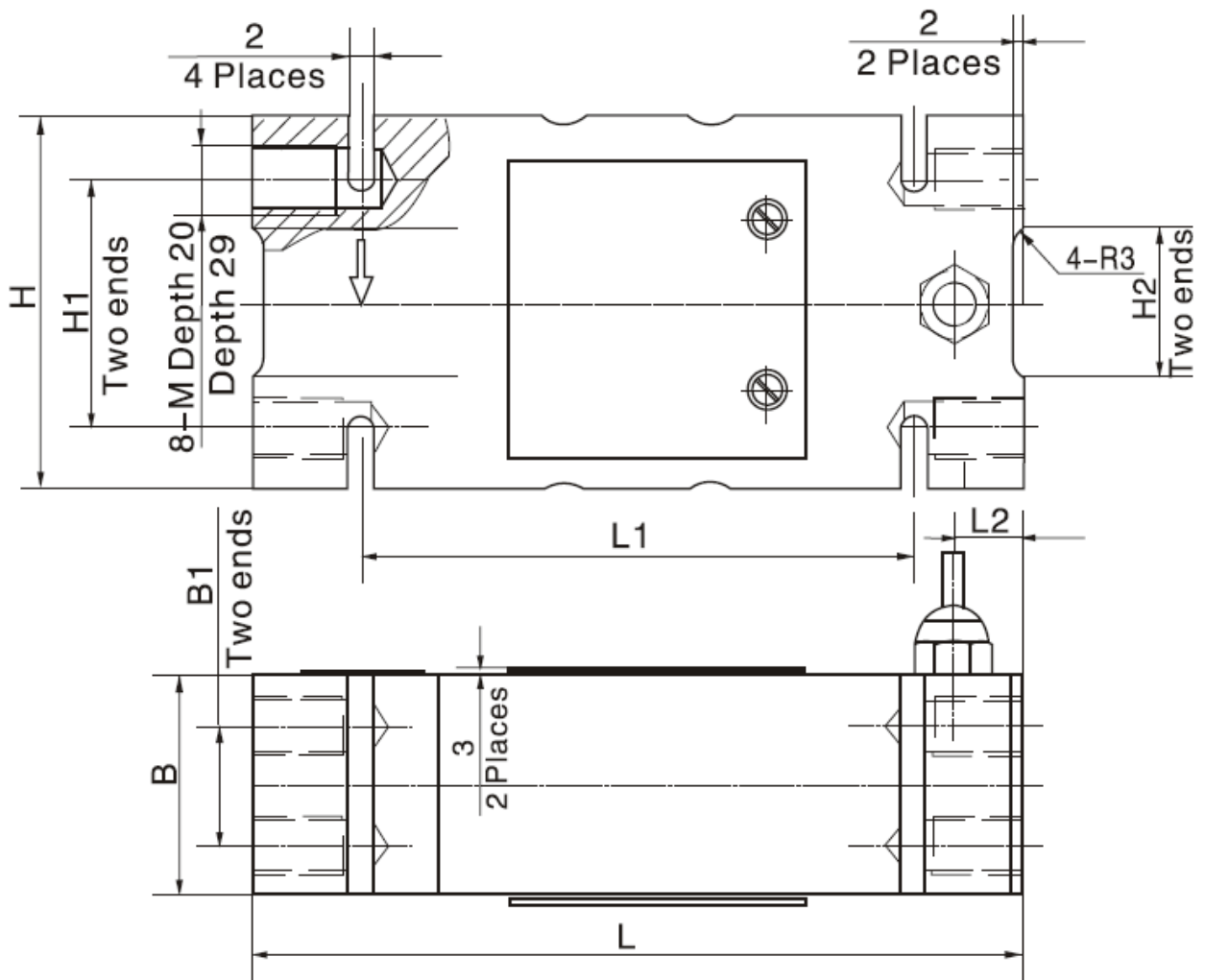
### 6-wire diagram



Specifications and dimensions are subject to change without notice and do not constitute any liability whatsoever.

# Type B6F Load Cell

Dimensions in mm



Dimension Capacity	B	B1	H	H1	H2	L	L1	L2	M
50-200kg	44	24	75	50	30	156	112	14	M12
250-500kg	60	36	95	70	30	146	110	11	M12
750kg-2000kg	76	46	125	95	65	176	110	24	M16

Specifications and dimensions are subject to change without notice and do not constitute any liability whatsoever.